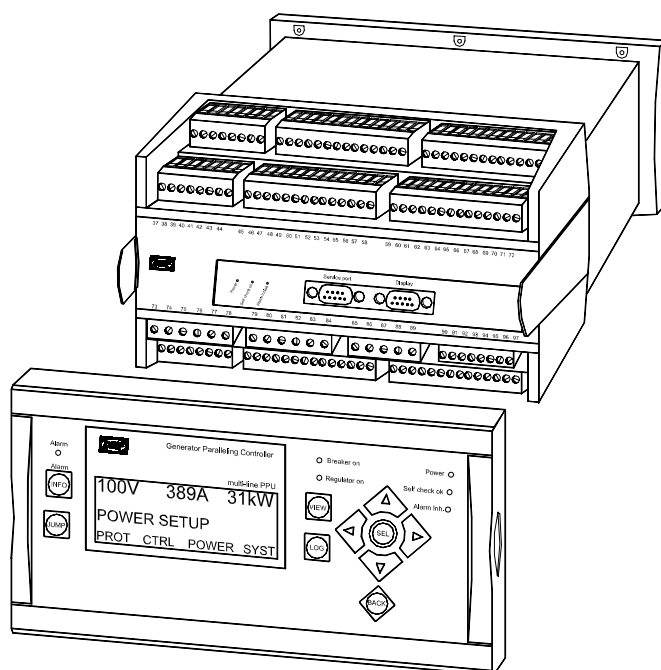


## Description of options

### Option M14 Conf. I/O ext. card – 4 digital outputs Multi-line 2 – version 2

4189340284B  
SW version 2.4X.X



- *Description of option*
- *Functional description*
- *Parameter list*

CE

## Table of contents

<b>1. WARNINGS AND LEGAL INFORMATION.....</b>	<b>3</b>
ELECTROSTATIC DISCHARGE AWARENESS .....	3
SAFETY ISSUES.....	3
DEFINITIONS .....	3
<b>2. DESCRIPTION OF OPTION .....</b>	<b>4</b>
M14 OPTION .....	4
TERMINAL DESCRIPTION .....	4
<b>3. FUNCTIONAL DESCRIPTION.....</b>	<b>5</b>
RELAY SETUP.....	5
<b>4. PARAMETER LIST .....</b>	<b>6</b>

**This manual is valid for standard multi-line 2 PPU/GPU/GPC units with firmware version 2.00.0 or later.**

## 1. Warnings and legal information

---

DEIF takes no responsibility for installation or operation of the generator set. If there is any doubt about how to install or operate the generator set controlled by the unit, the company responsible for the installation or the operation of the set must be contacted.

**The units are not to be opened by unauthorised personnel. If opened anyway, the warranty will be lost.**

### Electrostatic discharge awareness

Sufficient care must be taken to protect the terminals against static discharges during the installation. Once the unit is installed and connected, these precautions are no longer necessary.

### Safety issues

Installing the unit implies work with dangerous currents and voltages. Therefore, the installation should only be carried out by authorised personnel who understand the risks involved in working with live electrical equipment.



**Be aware of the hazardous live currents and voltages. Do not touch any AC measurement inputs as this could lead to injury or death.**

### Definitions

Throughout this document a number of notes and warnings will be presented. To ensure that these are noticed, they will be highlighted in order to separate them from the general text.

### Notes



**The notes provide general information which will be helpful for the reader to bear in mind.**

### Warning



**The warnings indicate a potentially dangerous situation which could result in death, personal injury or damaged equipment, if certain guidelines are not followed.**

## 2. Description of option

---

### M14 option

Function	ANSI no.
4 x configurable relay outputs for alarms or limit switches	74

### Terminal description

Term.	Function	Technical data	Description
126		Relay 10	Configurable
127		250V AC / 8A	
128		Relay 11	Configurable
129		250V AC / 8A	
130		Relay 12	Configurable
131		250V AC / 8A	
132		Relay 13	Configurable
133		250V AC / 8A	

The above relay numbers are to be used when selecting the specific relay.

The relays will be automatically integrated in the available no. of configurable relays in the unit and can be used as such. Please refer to the Designer's Reference Handbook.

### 3. Functional description

#### Relay setup

The relays can be configured in two different ways as illustrated below.

- 1) Alarm relay function  
*The relay is activated until the alarm that caused the activation is acknowledged and gone. The alarm LED is flashing or constant.*
- 2) Alarm sync. block relay function:  
*The relay is activated until the alarm that caused the activation is acknowledged and gone. When the relay is activated the synchronising is blocked, but the regulation is still active. The alarm LED is flashing or constant.*
- 3) Limit relay function:  
*The relay will activate at the limit set point. No alarm will appear. After the condition activating this relay has returned to normal, the relay will deactivate when the 'off delay' has expired*

The setup of the relay is done in the INPUT menu. All relays are set up in the same way. This example illustrates relay 2:

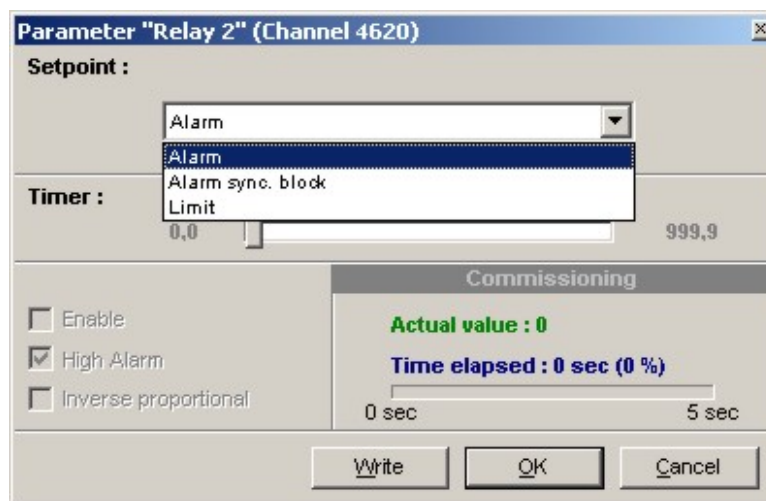
#### 4620 Relay 2

No.	Setting	First/min. setting	Second/max. setting	Third setting	Factory setting
4621	Relay 2	Function	Alarm	Alarm/sync. block	Alarm
4622	Relay 2	Off delay	0.0 s	999.9 s	5.0 s

The 'off delay' is the time between the disappearance of the event that caused the relay to activate and the actual deactivation of the relay.

#### PC utility software

The PC utility software is a Windows® based software, which can be downloaded from our website [www.deif.com](http://www.deif.com). To adjust the inputs via the PC utility software, a computer must be connected to the controller unit. Furthermore, the unit parameters must be uploaded to the computer.



## 4. Parameter list

---



For further information about the structure of the parameter descriptions, please see the Designer's Reference Handbook.

### 4700 Relay 10

No.	Setting		First/min. setting	Second/max. setting	Factory setting
4701	Relay 10	Function	Alarm	Limit	Alarm
4702	Relay 10	Off delay	0.0 s	999.9 s	5.0 s

### 4710 Relay 11

No.	Setting		First/min. setting	Second/max. setting	Factory setting
4710	Relay 11	Function	Alarm	Limit	Alarm
4712	Relay 11	Off delay	0.0 s	999.9 s	5.0 s

### 4720 Relay 12

No.	Setting		First/min. setting	Second/max. setting	Factory setting
4721	Relay 12	Function	Alarm	Limit	Alarm
4722	Relay 12	Off delay	0.0 s	999.9 s	5.0 s

### 4730 Relay 13

No.	Setting		First/min. setting	Second/max. setting	Factory setting
4731	Relay 13	Function	Alarm	Limit	Alarm
4732	Relay 13	Off delay	0.0 s	999.9 s	5.0 s

DEIF A/S reserves the right to change any of the above